

Components Needed:

- Candy Cane Plastic
- E1.31 16 or Pixie 16 Controller
- 10 Intelligent Pixel Strands 100ct (or 20 50ct)
- 10 Intelligent Extensions

Step 1: Install Lights

From the back (picture to the left shows front view) begin pushing the lights through the corrugated plastic following the path for each strand as shown. The default orientation is candy canes 1-5 facing left and candy canes 6-10 facing right, but this can be changed in the preview if desired.

Step 2: Mount Candy Canes

The Candy Canes can be mounted on the ground using 3ft x 1/2in rebar and zip ties.

Step 3: Setup E1.31 Controller

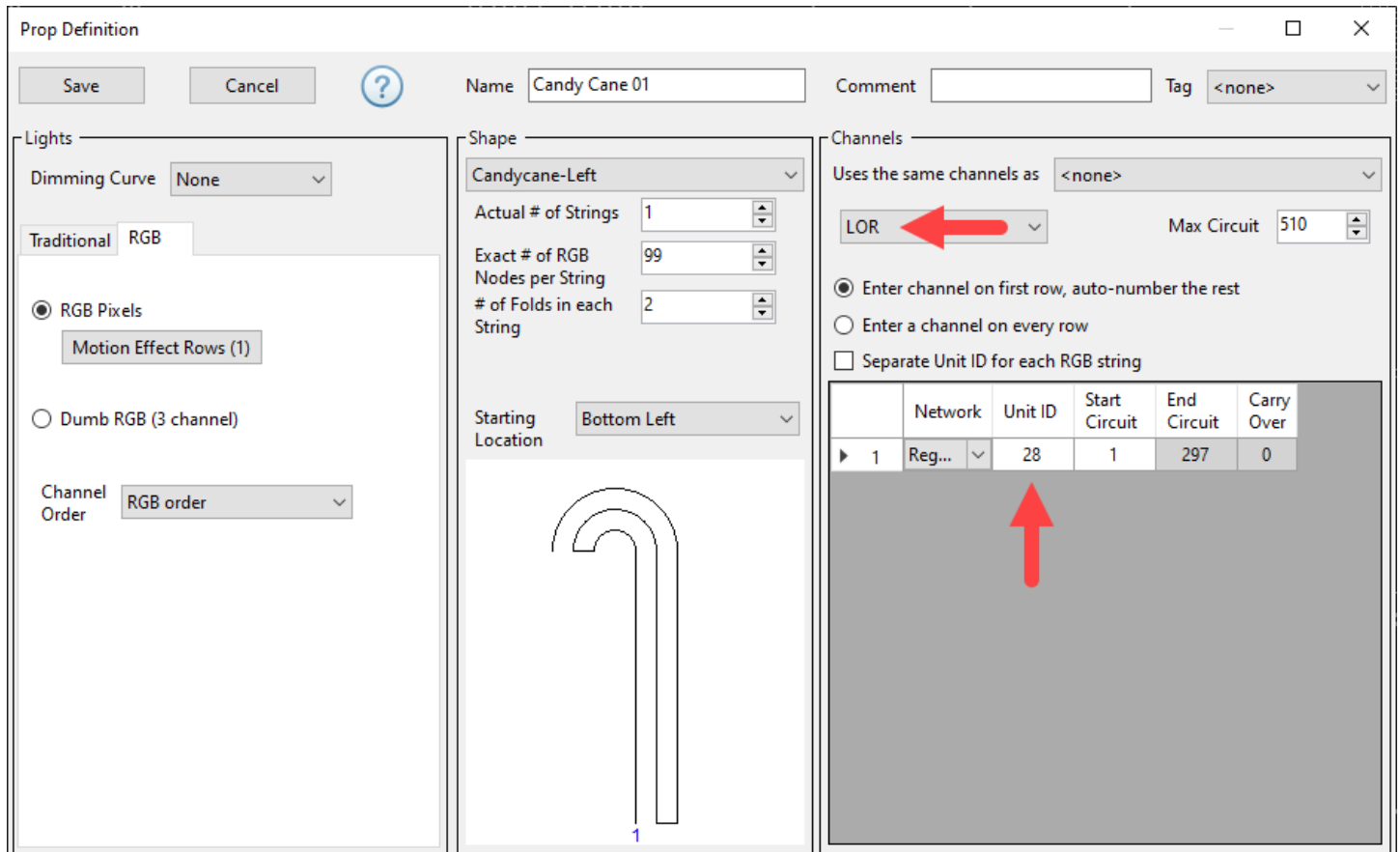
Setup the E1.31 controller using the following configuration. Timing is included in our Pro and Pro Plus layout sequences for 10 candy canes.

Outputs 1 - 16										
	Start Universe	Start Channel	End Universe	End Channel	Num Pixels	Null Pixels	Zig Zag	Group	Intensity Limit (%)	Reversed
Output 1	40	1	40	297	99	0	0	1	100	<input type="checkbox"/>
Output 2	40	298	41	84	99	0	0	1	100	<input type="checkbox"/>
Output 3	41	85	41	381	99	0	0	1	100	<input type="checkbox"/>
Output 4	41	382	42	168	99	0	0	1	100	<input type="checkbox"/>
Output 5	42	169	42	465	99	0	0	1	100	<input type="checkbox"/>
Output 6	42	466	43	252	99	0	0	1	100	<input type="checkbox"/>
Output 7	43	253	44	39	99	0	0	1	100	<input type="checkbox"/>
Output 8	44	40	44	336	99	0	0	1	100	<input type="checkbox"/>
Output 9	44	337	45	123	99	0	0	1	100	<input type="checkbox"/>
Output 10	45	124	45	420	99	0	0	1	100	<input type="checkbox"/>

Step 4: Setup Pixie 16 Controller

To setup the candy canes to run on a Pixie 16 controller first set the ID of the controller to #28 using the switches on the board 0010 1000 (Switches 3 & 5 ON, all others OFF).

The default controller for candy canes in the WowLights Pro & Pro Plus preview is an E1.31 controller and you will need to update the preview so it will use the Pixie 16 controller instead. To do this open the Light-O-Rama Sequencer, open the WOWC-ChristmasS5-Pro preview, double click on one of the candy canes and change DMX to LOR and change the unit ID for the candy cane.



Below are the Unit ID's for the candy canes in the same layout as they are shown in the preview (1-5 ascending on the left and 6-10 descending on the right).

05: 2C	06: 2D
04: 2B	07: 2E
03: 2A	08: 2F
02: 29	09: 30
01: 28	10: 31

Once all the candy canes have been updated to LOR and the Unit IDs have been set click Save to save the changes and it will be applied to all sequences linked to that preview.