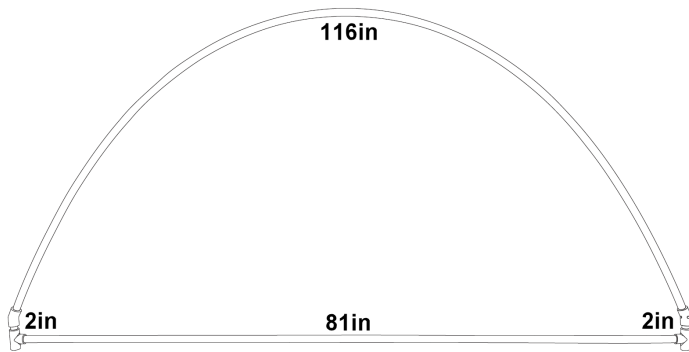


Required Parts Per Arch:

4 Arch Sections, 2 T Fittings, 2 22° Couplers
 2 10ft 1/2in Schedule 40 PVC Pipe
 2 Rebar Stakes 1/2in x 1ft
 8in Zip Ties
 50ct Intelligent Pixels

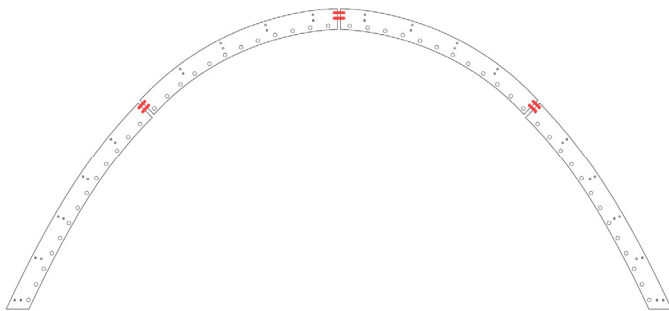
Required Tools:

Measuring Tape
 Hammer / Rubber Mallet
 PVC Cutter



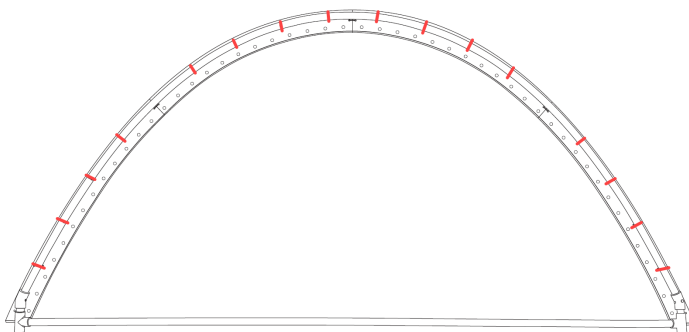
Step 1: Cut and Assemble Frame

To assemble the arch frame you need 4 PVC pipes – 116in, 81in, and two 2in. You can use a rubber mallet to help attach the parts if needed. PVC glue can also be used if desired.



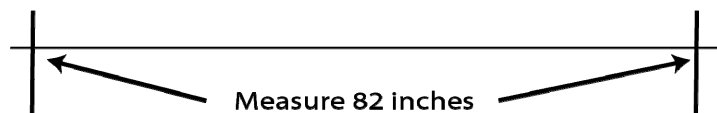
Step 2: Connect Arch Sections with Zip Ties

Connect arch sections loosely using zip ties and once correctly aligned zip ties can be tightened. Lower sections are more straight and upper sections are more curved to follow the usual bending of PVC poles. Also check to confirm uniform hole spacing throughout.



Step 3: Attach Arch Sections to PVC Frame & Insert Pixels

Attach arch sections to PVC using zip ties. Then insert pixels into plastic from left to right. Arches are usually installed with PVC pipe to the back so the picture to the left shows the back view.



Step 4: Sink Rebar and Lower Arch onto Rebar

Measure a line 82in long where you would like to setup the arch. Sink the 2 rebar stakes about 8in into the ground and then lower the arch onto the rebar.